



Where does water come from?

Why can we get water whenever we turn on the faucet?

Where does a river start?

What is a Green Dam?

What kind of place is Okutama?

What kind of animals live there?



"Okutama Mizu-to-Midori-no-Fureaikan" is a place to rediscover water, greenery, and Okutama.

It is a place to consider a better relationship between man and nature, the city, and water source areas.

Please stamp here!



The hall's mascot, "Kurin"

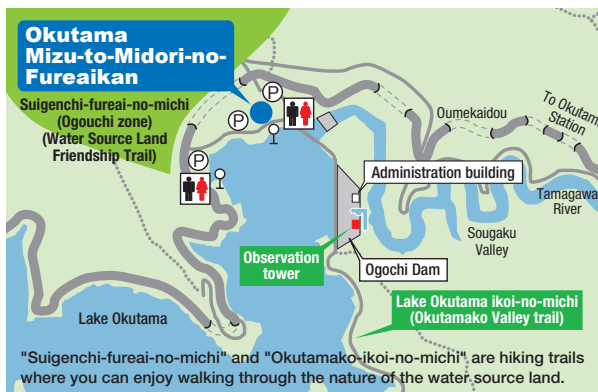
Open hours 9:30AM-5:00PM

Days Closed Wednesday (if Wednesday is a holiday, the following day)
Year-end and New Year holidays (Dec. 28-Jan. 4)
*The hall is sometimes temporarily closed during the winter season.

Admission fee Free

Traffic information Take a bus to the Ogochi from the "Okutama" Station of the JR Oume-Line, board the bus heading to Ogochi. (20 minutes)
Get off the bus at the "Lake Okutama" bus stop

Okutama Mizu-to-Midori-no-Fureaikan	20min.	Okutama	75min.	Hachioji IC	30min.	Shinjuku	By car	
	Oumekaidou	Oumekaidou	Chuodou					
By train	1min.	Lake Okutama	20min.	Okutama	70min.	Tachikawa	40min.	Shinjuku
	By foot	Bus stop	Nishi-Tokyo-Bus	Oume-Line	Chuo-Line			



- Things to remember**
- Do not eat and drink in the hall. Eating and Drinking is allowed on the 2nd floor at the Panorama Restaurant and Panorama Shop.
 - Please take your trash home with you. This area is part of the Chichibu Tama Kai National Park, and is an important water source area for storing precious water. Be sure not to litter.
 - Do not run or play near the elevator or on the stairs. This is dangerous and disturbs other visitors.
 - In the event of emergency, staff members or attendants will give evacuation directions. Please follow their guidance.



Okutama Mizu-to-Midori-no-Fureaikan

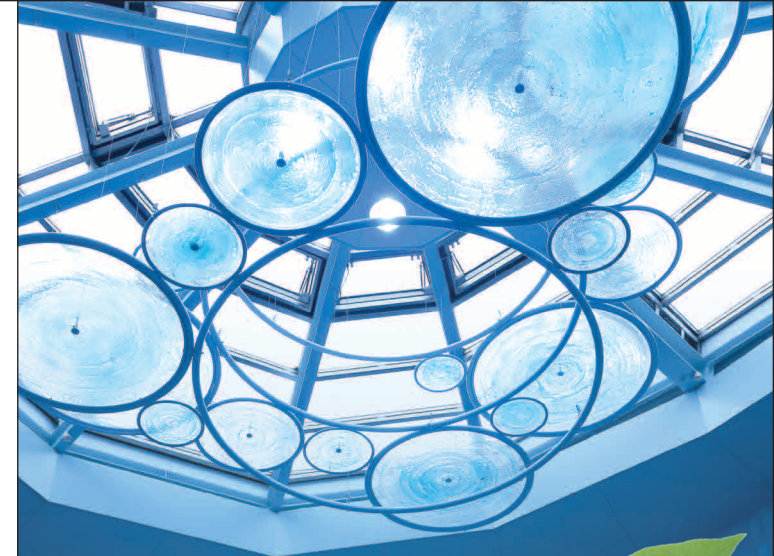
5, Hara, Okutama Town, Nishitama-gun, Tokyo TEL.0428-86-2731 FAX.0428-86-2732

Bureau of Waterworks Tokyo Metropolitan Government
<http://www.waterworks.metro.tokyo.jp/>

Okutama Town
<http://www.town.okutama.tokyo.jp/>



We use 100% recycled paper pulp



Okutama Mizu-to-Midori-no-Fureaikan



Bureau of Waterworks Tokyo Metropolitan Government

Okutama Town

Communication plaza

Mizu-no-hall (Water hall)

The entire floor is covered with a map of Tama River and many glittering pieces of artwork are on the vaulted ceiling welcome you.

1

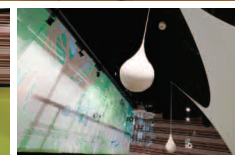


Water is born.

The Secret of Green Dam

You can experience the secrets of the water in the forest, the source of the precious water from the faucet.

3



Home land of water

Trip to History and Culture

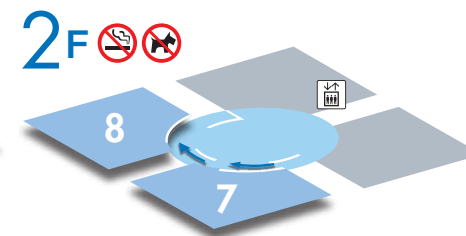
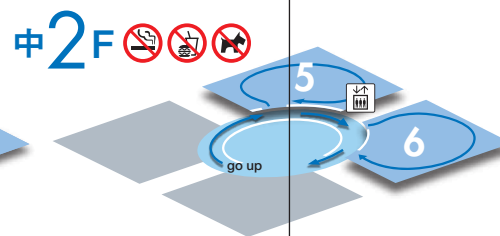
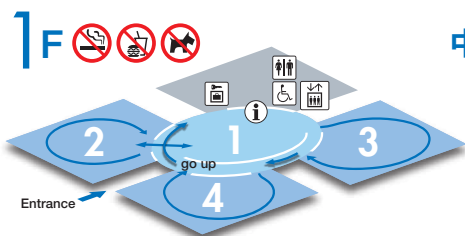
The history and folk culture of Okutama are introduced.

2



FLOOR GUIDE

Electricity for this hall is supplied by a photovoltaic system (solar power generation).



Water Shines

Okutama 3D Theater

Watch the exciting 3D film and experience the natural beauty of Okutama.

5



Panorama Shop

Buna-no-mori

Specialties from Okutama are arranged and sold.

7



Water Collects

Ogochi Dam and Nature

You can learn the secrets of Ogochi Dam and the surrounding rich nature.

4



Water Spreads

The Long Journey of Water

Experience the journey of water with the hall's mascot, "Kurin", and think about water-related problems.

6



Panorama Restaurant

Katakuri-no-Hana

Taste the local cuisine of Okutama while enjoying a view of a lake.

8